

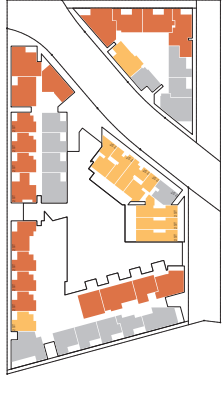
# ATTACHMENT A



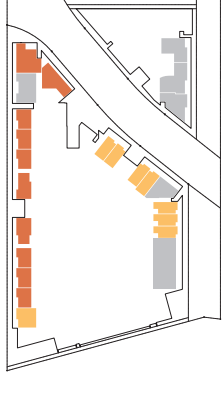
04 Level 03



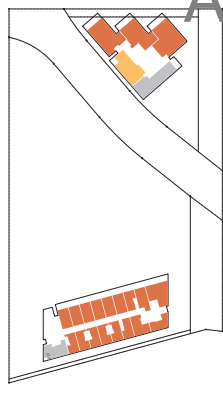
05 Level 02



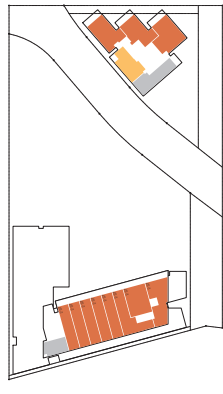
02 Level 01



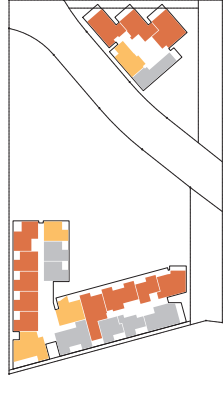
01 Ground Floor



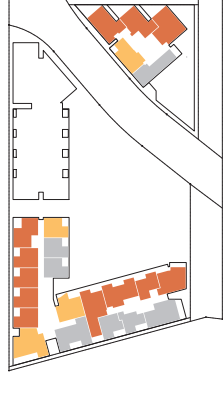
08 Level 07



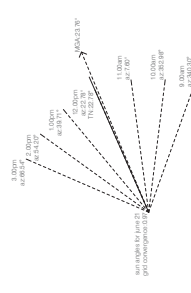
07 Level 06



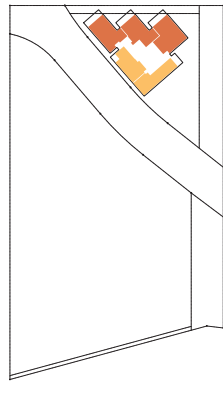
06 Level 05



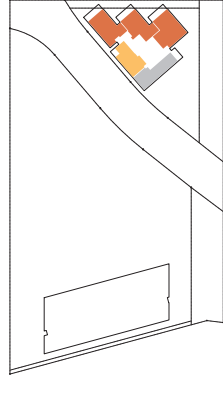
05 Level 04



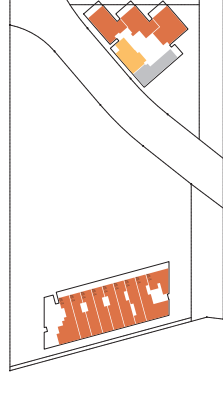
| SOLAR     |     | A   | B   | C   | D   | TOTAL |       |
|-----------|-----|-----|-----|-----|-----|-------|-------|
| APR SOLAR | 11  | 07  | 27  | 61  | 105 | 215   | 70.2% |
| APR TOTAL | 44  | 07  | 27  | 78  | 156 | 215   | 70.2% |
| %         | 60% | 68% | 68% | 75% | 68% |       |       |



11 Level 10



10 Level 09



09 Level 08

|  |   |   |  |   |                        |
|--|---|---|--|---|------------------------|
| <p>Revision</p> <p>01 18/08/14<br/>02 18/08/14<br/>03 05/12/14<br/>04</p> <p>Description</p> <p>Issue for P10 DA<br/>Issue for Information<br/>Issue for Development Application</p> | <p>Client</p> <p>Meriton<br/>MARELTON<br/>RESIDENTIAL</p> | <p>Project</p> <p>94 - 92 Epsom Road<br/>Zetland</p> <p>Project No. 14027</p> | <p>Drawing Title</p> <p>SEPP 65 Compliance Diagrams_Solar Access</p> | <p>Scale</p> <p>1:1000@A1<br/>1:2000@A3</p> | <p>Issue</p> <p>04</p> |
| <p>Architect</p> <p><b>A+C</b><br/>ARCHITECTS<br/>78 Macleay Street, Chippendale NSW 1505 AUSTRALIA<br/>PH +61 2 8311 8222 FAX +61 2 8311 8200<br/>ABN 53 003 782 250</p>            |   |   |  |   |                        |
| <p>Information</p> <p>Drawing Status</p>   |   |   |  |   |                        |

© 2014 A+C Architects. All Rights Reserved. This document is the property of A+C Architects. It is to be used only for the purposes for which it was prepared. It is not to be distributed, copied, or otherwise used without the prior written consent of A+C Architects. A+C Architects is a registered company under the Corporations Act 2001. A+C Architects is a member of the Australian Institute of Architects. A+C Architects is a member of the Australian Institute of Architects. A+C Architects is a member of the Australian Institute of Architects. A+C Architects is a member of the Australian Institute of Architects.

# ATTACHMENT A



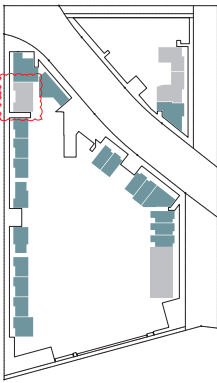
04 Level 03



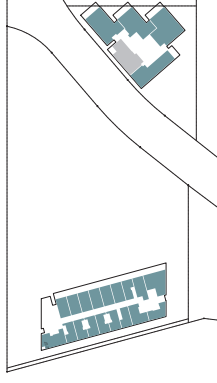
05 Level 02



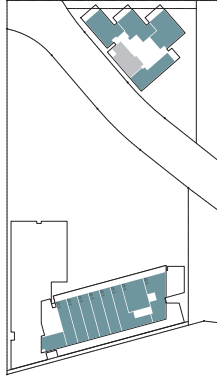
02 Level 01



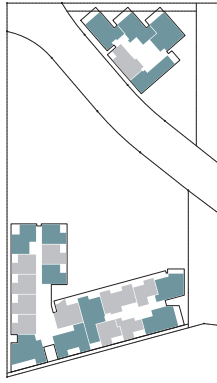
01 Ground Floor



08 Level 07



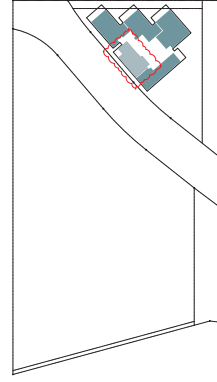
07 Level 06



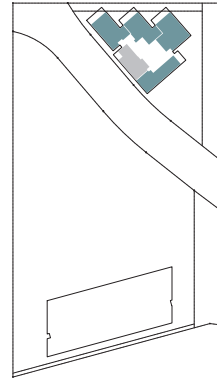
06 Level 05



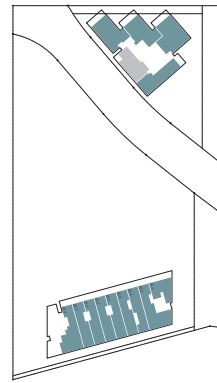
05 Level 04



11 Level 10



10 Level 09

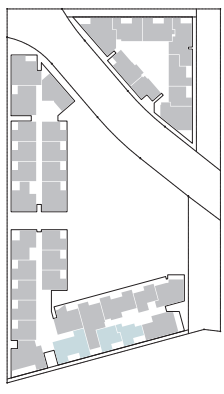


09 Level 08

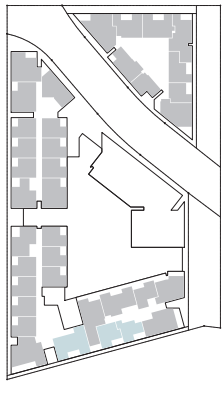
| NATURAL VENT                    | A   | B    | C    | D    | TOTAL |
|---------------------------------|-----|------|------|------|-------|
| NO                              | 00  | 00   | 18   | 00   | 18    |
| WITH ADDITIONAL INTERBASED VENT | 00  | 100% | 100% | 100% | 100%  |
| % TOTAL                         | 00% | 100% | 100% | 100% | 100%  |
| WITH ADDITIONAL INTERBASED VENT | 00% | 100% | 100% | 100% | 100%  |
| % TOTAL                         | 00% | 100% | 100% | 100% | 100%  |
| NO                              | 42  | 06   | 02   | 06   | 56    |
| % TOTAL                         | 65% | 100% | 61%  | 65%  | 65%   |

Drawing Title: SEPP 65 Compliance Diagrams\_Natural Ventilation  
 Drawing Status: Approval  
 Drawing No.: 1:1000@A1  
 Scale: 1:1000@A1  
 Issue: 03  
 Project: 94-32 Epsom Road, Zetland  
 Project No.: 14027  
 Architect: A+C ARCHITECTS  
 78 Maple Street, Chesham NSW 2568 AUSTRALIA  
 PH: +61 2 8311 8222 FX: +61 2 8311 8200  
 ABN: 53 003 782 250  
 Client: Meriton  
 MARELLI ON  
 Key: [Diagram showing levels A, B, C, D]  
 Ver: AP01  
 LC JK  
 Description: Issue for Development Application  
 Issue for Development Application  
 No: 2017/14  
 Date: 11/05/15  
 Issue for Development Application

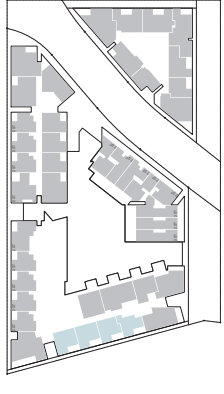
# ATTACHMENT A



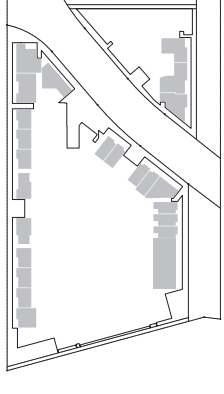
04 Level 03



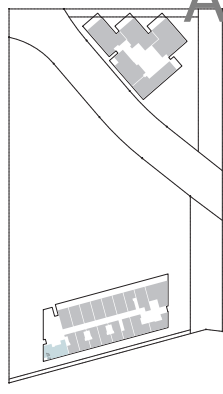
05 Level 02



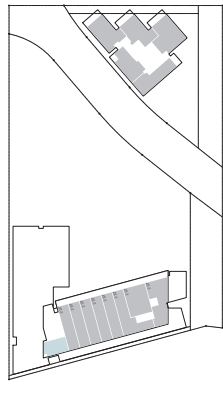
02 Level 01



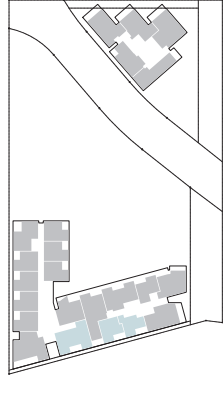
01 Ground Floor



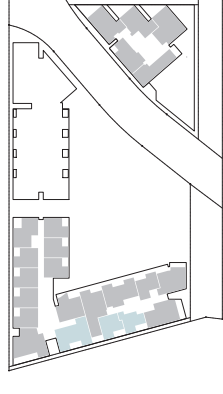
08 Level 07



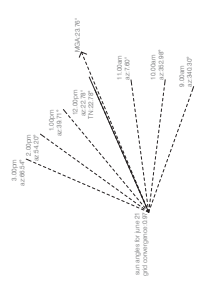
07 Level 06



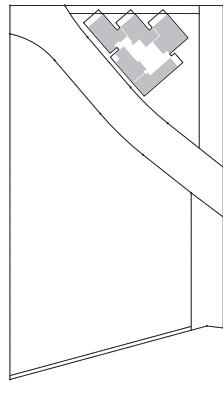
06 Level 05



05 Level 04



| SOUTH FACING |    | A  | B  | C  | D   | TOTAL |
|--------------|----|----|----|----|-----|-------|
| NO           | 98 | 0% | 0% | 0% | 97  | 97%   |
| ART TOTAL    | 98 | 0% | 0% | 0% | 100 | 215   |
| %            |    | 0% | 0% | 0% | 99% | 07.9% |



11 Level 11

**Client:** Meriton  
**Project:** 94-132 Epsom Road, Zetland  
**Project No.:** 14027  
**Scale:** 1:1000@A1  
**Drawing No.:** DK-00-9002  
**Issue:** 02  
**Scale:** 1:2000@A3  
**SEPP 65 Compliance Diagrams\_South Facing**  
**Information**  
**Architect:** A+J+C ARCHITECTS  
 78 Macleay Street, Chippendale NSW 1505 AUSTRALIA  
 Ph: +61 2 8311 8222 Fax: +61 2 8311 8200  
 ABN: 53 003 782 250  
**Revision:** 02  
**Date:** 02/12/14  
**Author:** [Name]  
**Check:** [Name]  
**Designation:** [Title]  
**Approved:** [Signature]  
**Date:** [Date]

# ATTACHMENT A



Level 03

|          |                               |                               |                               |                                |                                |
|----------|-------------------------------|-------------------------------|-------------------------------|--------------------------------|--------------------------------|
| BUILDING | A                             | B                             | C                             | D                              | TOTAL                          |
| RES      | 9607 <sup>m<sup>2</sup></sup> | 9497 <sup>m<sup>2</sup></sup> | 9497 <sup>m<sup>2</sup></sup> | 18207 <sup>m<sup>2</sup></sup> | 36807 <sup>m<sup>2</sup></sup> |



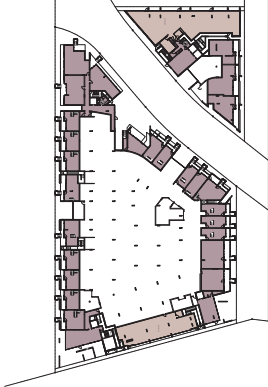
Level 02

|          |                               |                               |                               |                                |                                |
|----------|-------------------------------|-------------------------------|-------------------------------|--------------------------------|--------------------------------|
| BUILDING | A                             | B                             | C                             | D                              | TOTAL                          |
| RES      | 9607 <sup>m<sup>2</sup></sup> | 9497 <sup>m<sup>2</sup></sup> | 9497 <sup>m<sup>2</sup></sup> | 18207 <sup>m<sup>2</sup></sup> | 36807 <sup>m<sup>2</sup></sup> |



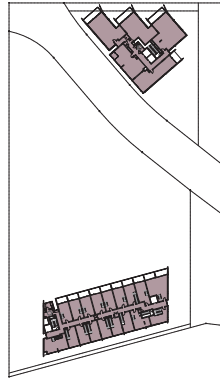
Level 01

|          |                               |                               |                               |                                |                                |
|----------|-------------------------------|-------------------------------|-------------------------------|--------------------------------|--------------------------------|
| BUILDING | A                             | B                             | C                             | D                              | TOTAL                          |
| RES      | 9607 <sup>m<sup>2</sup></sup> | 9497 <sup>m<sup>2</sup></sup> | 9497 <sup>m<sup>2</sup></sup> | 17207 <sup>m<sup>2</sup></sup> | 41007 <sup>m<sup>2</sup></sup> |



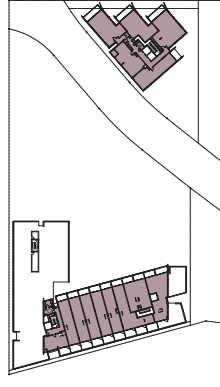
Ground Floor

|          |                               |                               |                               |                               |                                |
|----------|-------------------------------|-------------------------------|-------------------------------|-------------------------------|--------------------------------|
| BUILDING | A                             | B                             | C                             | D                             | TOTAL                          |
| RES      | 8207 <sup>m<sup>2</sup></sup> | 3717 <sup>m<sup>2</sup></sup> | 4917 <sup>m<sup>2</sup></sup> | 9607 <sup>m<sup>2</sup></sup> | 17207 <sup>m<sup>2</sup></sup> |
| COMM     | 3817 <sup>m<sup>2</sup></sup> |                               |                               | 2297 <sup>m<sup>2</sup></sup> | 6114 <sup>m<sup>2</sup></sup>  |



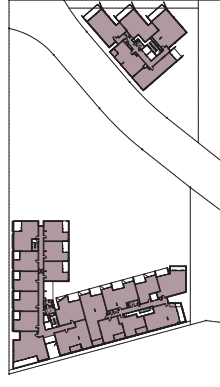
Level 07

|          |                               |   |   |                               |                                |
|----------|-------------------------------|---|---|-------------------------------|--------------------------------|
| BUILDING | A                             | B | C | D                             | TOTAL                          |
| RES      | 5217 <sup>m<sup>2</sup></sup> |   |   | 7207 <sup>m<sup>2</sup></sup> | 12424 <sup>m<sup>2</sup></sup> |



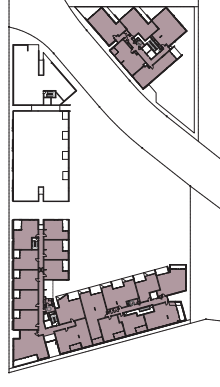
Level 06

|          |                               |   |   |                               |                                |
|----------|-------------------------------|---|---|-------------------------------|--------------------------------|
| BUILDING | A                             | B | C | D                             | TOTAL                          |
| RES      | 5217 <sup>m<sup>2</sup></sup> |   |   | 7917 <sup>m<sup>2</sup></sup> | 13134 <sup>m<sup>2</sup></sup> |



Level 05

|          |                               |   |   |                                |                                |
|----------|-------------------------------|---|---|--------------------------------|--------------------------------|
| BUILDING | A                             | B | C | D                              | TOTAL                          |
| RES      | 5217 <sup>m<sup>2</sup></sup> |   |   | 16117 <sup>m<sup>2</sup></sup> | 21334 <sup>m<sup>2</sup></sup> |



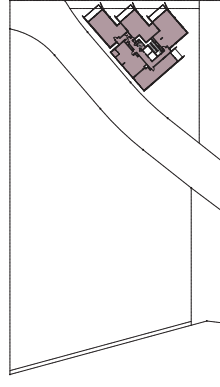
Level 04

|          |                               |   |   |                                |                                |
|----------|-------------------------------|---|---|--------------------------------|--------------------------------|
| BUILDING | A                             | B | C | D                              | TOTAL                          |
| RES      | 5217 <sup>m<sup>2</sup></sup> |   |   | 16717 <sup>m<sup>2</sup></sup> | 21934 <sup>m<sup>2</sup></sup> |



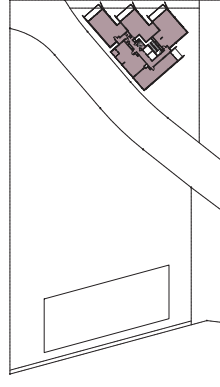
Level 08

|          |                               |   |   |                                |                                |
|----------|-------------------------------|---|---|--------------------------------|--------------------------------|
| BUILDING | A                             | B | C | D                              | TOTAL                          |
| RES      | 5217 <sup>m<sup>2</sup></sup> |   |   | 22717 <sup>m<sup>2</sup></sup> | 27934 <sup>m<sup>2</sup></sup> |



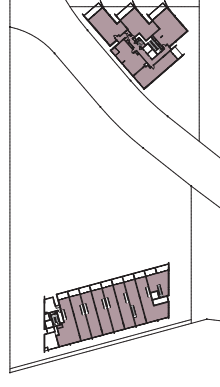
Level 09

|          |                               |   |   |                                |                                |
|----------|-------------------------------|---|---|--------------------------------|--------------------------------|
| BUILDING | A                             | B | C | D                              | TOTAL                          |
| RES      | 5217 <sup>m<sup>2</sup></sup> |   |   | 22717 <sup>m<sup>2</sup></sup> | 27934 <sup>m<sup>2</sup></sup> |



Level 10

|          |                               |   |   |                                |                                |
|----------|-------------------------------|---|---|--------------------------------|--------------------------------|
| BUILDING | A                             | B | C | D                              | TOTAL                          |
| RES      | 5217 <sup>m<sup>2</sup></sup> |   |   | 16117 <sup>m<sup>2</sup></sup> | 21334 <sup>m<sup>2</sup></sup> |



Level 11

|          |                               |   |   |                                |                                |
|----------|-------------------------------|---|---|--------------------------------|--------------------------------|
| BUILDING | A                             | B | C | D                              | TOTAL                          |
| RES      | 5217 <sup>m<sup>2</sup></sup> |   |   | 16117 <sup>m<sup>2</sup></sup> | 21334 <sup>m<sup>2</sup></sup> |

REVISION TO COVER SHEET FOR RES CALCULATIONS

|          |                               |                               |                               |                                |                                |
|----------|-------------------------------|-------------------------------|-------------------------------|--------------------------------|--------------------------------|
| BUILDING | A                             | B                             | C                             | D                              | TOTAL                          |
| RES      | 9607 <sup>m<sup>2</sup></sup> | 9497 <sup>m<sup>2</sup></sup> | 9497 <sup>m<sup>2</sup></sup> | 18207 <sup>m<sup>2</sup></sup> | 36807 <sup>m<sup>2</sup></sup> |

CRUDE FLOOR AREA TOTALS

|          |                               |                               |                               |                                |                                |
|----------|-------------------------------|-------------------------------|-------------------------------|--------------------------------|--------------------------------|
| BUILDING | A                             | B                             | C                             | D                              | TOTAL                          |
| RES      | 9607 <sup>m<sup>2</sup></sup> | 9497 <sup>m<sup>2</sup></sup> | 9497 <sup>m<sup>2</sup></sup> | 18207 <sup>m<sup>2</sup></sup> | 36807 <sup>m<sup>2</sup></sup> |
| COMM     |                               |                               |                               |                                |                                |

PROJECT

94- 52 Epsilon Road  
Zetland

Architect

**A+I+C**  
ARCHITECTS  
78 Maple Street, Chesham NSW 2568 AUSTRALIA  
PH +61 2 8311 8223 FAX +61 2 8311 8200  
ASBN 53 003 782 250

Project No. 14027

Client

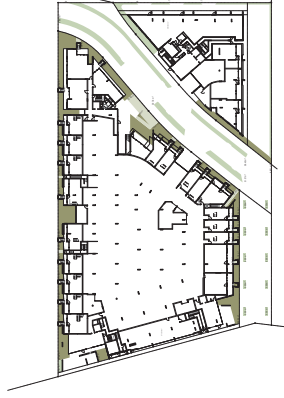
Meriton  
MARELLI ON

Key

Revision

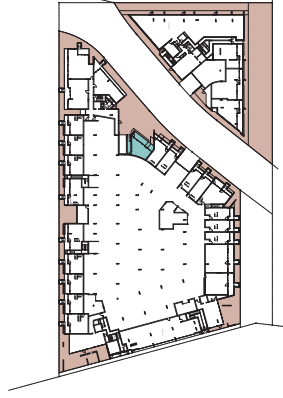
|    |          |                                   |
|----|----------|-----------------------------------|
| No | Date     | Description                       |
| 01 | 02/08/14 | Issue for Information             |
| 02 | 02/08/14 | Issue for Information             |
| 03 | 10/11/14 | Issue for Information             |
| 04 | 05/12/14 | Issue for Development Application |
| 05 | 05/12/14 | Issue for Development Application |

Ver Appr  
LC JK  
LC JK  
LC JK  
LC JK



01 Ground Level - Drain Set

| BUILDING            | A                   | B                  | C                  | D                  | TOTAL               |
|---------------------|---------------------|--------------------|--------------------|--------------------|---------------------|
| PERVIOUS            | 0.00m <sup>2</sup>  | 0.00m <sup>2</sup> | 0.00m <sup>2</sup> | 0.00m <sup>2</sup> | 0.00m <sup>2</sup>  |
| IMPERVIOUS          | 13.14m <sup>2</sup> | 0.00m <sup>2</sup> | 0.00m <sup>2</sup> | 0.00m <sup>2</sup> | 13.14m <sup>2</sup> |
| PERCENTAGE PERVIOUS | 0.00%               | 0.00%              | 0.00%              | 0.00%              | 0.00%               |



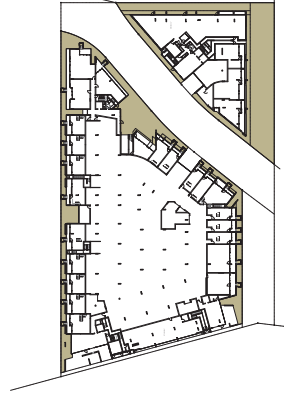
02 Ground Floor - Common Open Space

| BUILDING            | A                  | B                  | C                  | D                  | TOTAL              |
|---------------------|--------------------|--------------------|--------------------|--------------------|--------------------|
| PERVIOUS            | 0.00m <sup>2</sup> | 0.00m <sup>2</sup> | 0.00m <sup>2</sup> | 0.00m <sup>2</sup> | 0.00m <sup>2</sup> |
| IMPERVIOUS          | 6.00m <sup>2</sup> | 0.00m <sup>2</sup> | 0.00m <sup>2</sup> | 0.00m <sup>2</sup> | 6.00m <sup>2</sup> |
| PERCENTAGE PERVIOUS | 0.00%              | 0.00%              | 0.00%              | 0.00%              | 0.00%              |



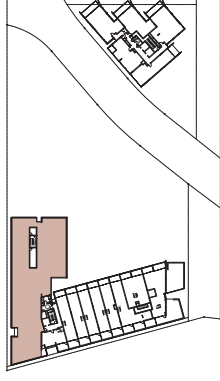
03 Level 01 - Common Open Space

| BUILDING            | A                   | B                  | C                  | D                  | TOTAL               |
|---------------------|---------------------|--------------------|--------------------|--------------------|---------------------|
| PERVIOUS            | 0.00m <sup>2</sup>  | 0.00m <sup>2</sup> | 0.00m <sup>2</sup> | 0.00m <sup>2</sup> | 0.00m <sup>2</sup>  |
| IMPERVIOUS          | 12.00m <sup>2</sup> | 0.00m <sup>2</sup> | 0.00m <sup>2</sup> | 0.00m <sup>2</sup> | 12.00m <sup>2</sup> |
| PERCENTAGE PERVIOUS | 0.00%               | 0.00%              | 0.00%              | 0.00%              | 0.00%               |



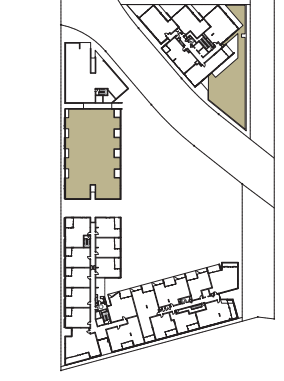
05 Ground Floor - Landscaped Area

| BUILDING            | A                   | B                  | C                  | D                  | TOTAL               |
|---------------------|---------------------|--------------------|--------------------|--------------------|---------------------|
| PERVIOUS            | 0.00m <sup>2</sup>  | 0.00m <sup>2</sup> | 0.00m <sup>2</sup> | 0.00m <sup>2</sup> | 0.00m <sup>2</sup>  |
| IMPERVIOUS          | 17.00m <sup>2</sup> | 0.00m <sup>2</sup> | 0.00m <sup>2</sup> | 0.00m <sup>2</sup> | 17.00m <sup>2</sup> |
| PERCENTAGE PERVIOUS | 0.00%               | 0.00%              | 0.00%              | 0.00%              | 0.00%               |



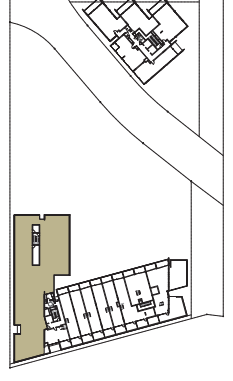
04 Level 06 - Common Open Space

| BUILDING            | A                   | B                  | C                  | D                  | TOTAL               |
|---------------------|---------------------|--------------------|--------------------|--------------------|---------------------|
| PERVIOUS            | 0.00m <sup>2</sup>  | 0.00m <sup>2</sup> | 0.00m <sup>2</sup> | 0.00m <sup>2</sup> | 0.00m <sup>2</sup>  |
| IMPERVIOUS          | 77.00m <sup>2</sup> | 0.00m <sup>2</sup> | 0.00m <sup>2</sup> | 0.00m <sup>2</sup> | 77.00m <sup>2</sup> |
| PERCENTAGE PERVIOUS | 0.00%               | 0.00%              | 0.00%              | 0.00%              | 0.00%               |



07 Level 04 - Landscaped Area

| BUILDING            | A                   | B                  | C                  | D                  | TOTAL               |
|---------------------|---------------------|--------------------|--------------------|--------------------|---------------------|
| PERVIOUS            | 0.00m <sup>2</sup>  | 0.00m <sup>2</sup> | 0.00m <sup>2</sup> | 0.00m <sup>2</sup> | 0.00m <sup>2</sup>  |
| IMPERVIOUS          | 14.00m <sup>2</sup> | 0.00m <sup>2</sup> | 0.00m <sup>2</sup> | 0.00m <sup>2</sup> | 14.00m <sup>2</sup> |
| PERCENTAGE PERVIOUS | 0.00%               | 0.00%              | 0.00%              | 0.00%              | 0.00%               |



08 Level 06 - Landscaped Area

| BUILDING            | A                   | B                  | C                  | D                  | TOTAL               |
|---------------------|---------------------|--------------------|--------------------|--------------------|---------------------|
| PERVIOUS            | 0.00m <sup>2</sup>  | 0.00m <sup>2</sup> | 0.00m <sup>2</sup> | 0.00m <sup>2</sup> | 0.00m <sup>2</sup>  |
| IMPERVIOUS          | 12.00m <sup>2</sup> | 0.00m <sup>2</sup> | 0.00m <sup>2</sup> | 0.00m <sup>2</sup> | 12.00m <sup>2</sup> |
| PERCENTAGE PERVIOUS | 0.00%               | 0.00%              | 0.00%              | 0.00%              | 0.00%               |

| BUILDING            | A                   | B                  | C                  | D                  | TOTAL               |
|---------------------|---------------------|--------------------|--------------------|--------------------|---------------------|
| PERVIOUS            | 0.00m <sup>2</sup>  | 0.00m <sup>2</sup> | 0.00m <sup>2</sup> | 0.00m <sup>2</sup> | 0.00m <sup>2</sup>  |
| IMPERVIOUS          | 11.14m <sup>2</sup> | 0.00m <sup>2</sup> | 0.00m <sup>2</sup> | 0.00m <sup>2</sup> | 11.14m <sup>2</sup> |
| PERCENTAGE PERVIOUS | 0.00%               | 0.00%              | 0.00%              | 0.00%              | 0.00%               |

% of 10.33m<sup>2</sup>  
SITE AREA  
11.14m<sup>2</sup>  
11.70%

| BUILDING            | A                  | B                  | C                  | D                  | TOTAL              |
|---------------------|--------------------|--------------------|--------------------|--------------------|--------------------|
| PERVIOUS            | 0.00m <sup>2</sup> | 0.00m <sup>2</sup> | 0.00m <sup>2</sup> | 0.00m <sup>2</sup> | 0.00m <sup>2</sup> |
| IMPERVIOUS          | 4.40m <sup>2</sup> | 0.00m <sup>2</sup> | 0.00m <sup>2</sup> | 0.00m <sup>2</sup> | 4.40m <sup>2</sup> |
| PERCENTAGE PERVIOUS | 0.00%              | 0.00%              | 0.00%              | 0.00%              | 0.00%              |

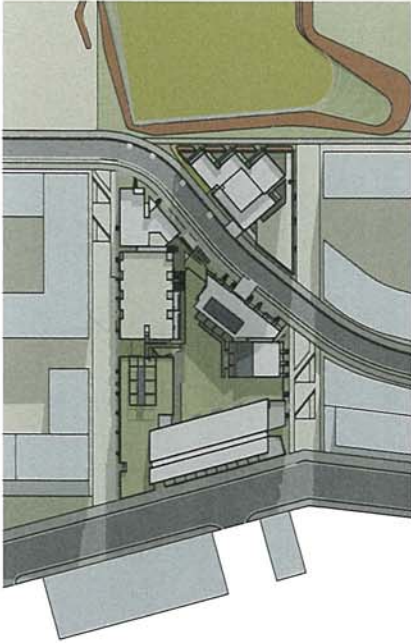
(NOT INCLUDING COMMON SPACE) 37.0%

# ATTACHMENT A

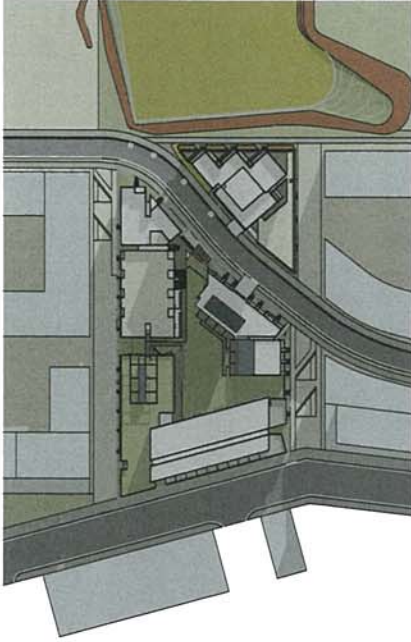
|  |   |
|--|---|
| <p>Project: 94-32 Epsom Road, Zetland</p> <p>Project No: 14027</p> <p>Architect: A+C Architects Pty Ltd<br/>78 Maple Street, Chesham NSW 2568 AUSTRALIA<br/>PH: +61 2 8311 8222 / +61 2 8311 8200<br/>ABN: 53 603 782 250</p> <p>Client: Meriton<br/>Meriton<br/>Meriton<br/>Meriton</p> <p>Drawn By: Ver Agoff<br/>Date: 05/17/14<br/>Description: Issues for Development Application</p> <p>Checked By: Ver Agoff<br/>Date: 05/17/14<br/>Description: Issues for Development Application</p> | <p>Drawing Title: Area Calculation Plans</p> <p>Drawing No: DK-00-9101</p> <p>Scale: 1:1000@A1<br/>1:2000@A3</p> <p>Issue: 01</p> |
|--|---|

This is a preliminary drawing. It is not for construction. It is for information only. It is not to be used for any other purpose. It is not to be used for any other purpose. It is not to be used for any other purpose.

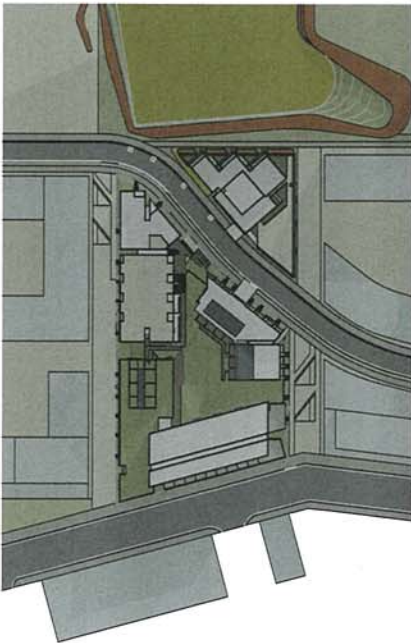
# ATTACHMENT A



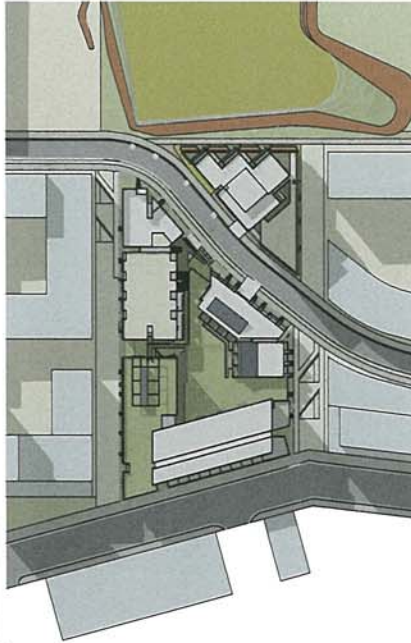
01 June 21, 10am



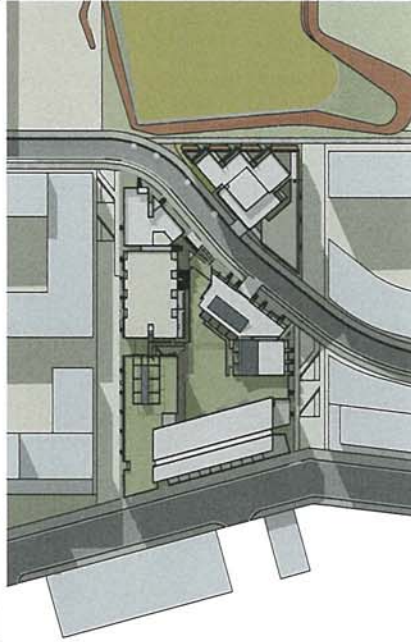
02 June 21, 11am



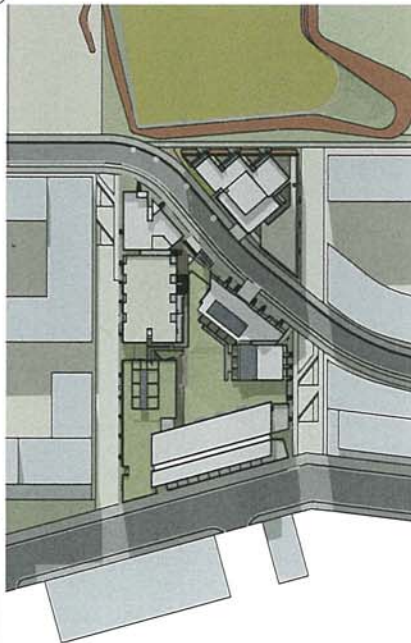
03 June 21, 12pm



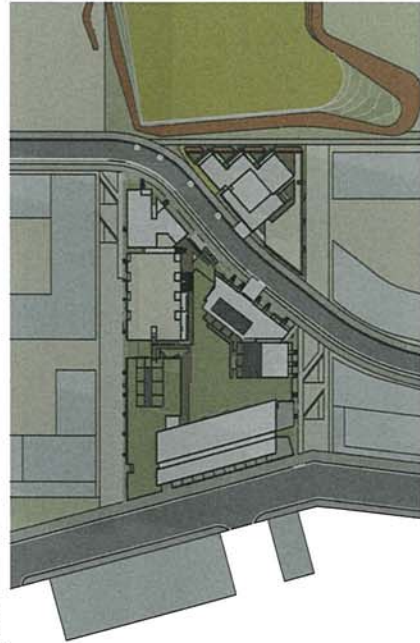
04 June 21, 1pm



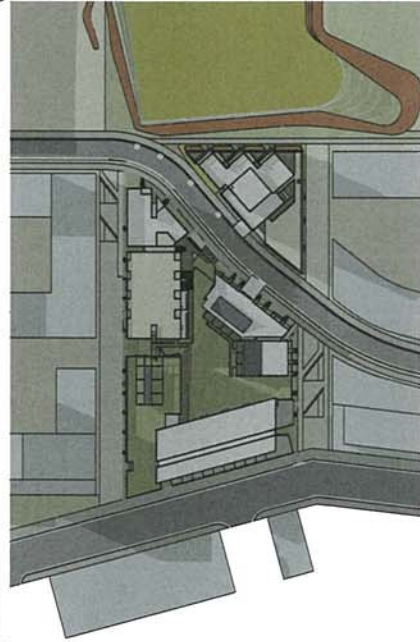
05 June 21, 2pm



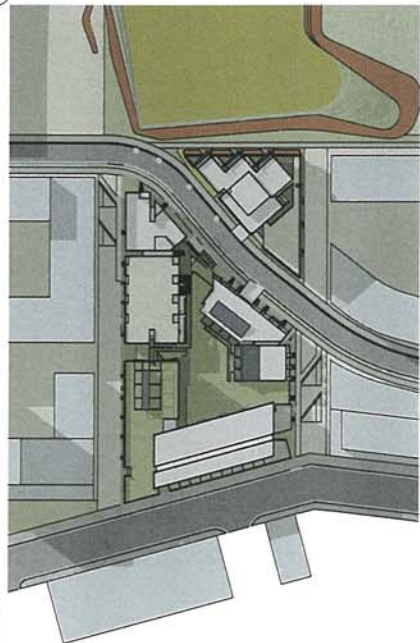
06 June 21, 3pm



07 June 21, 4pm



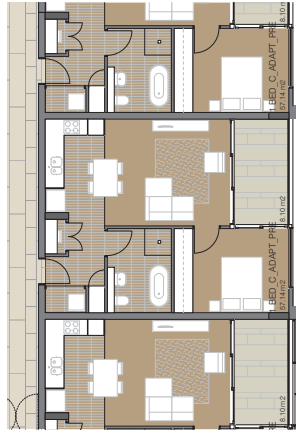
08 June 21, 5pm



09 June 21, 6pm

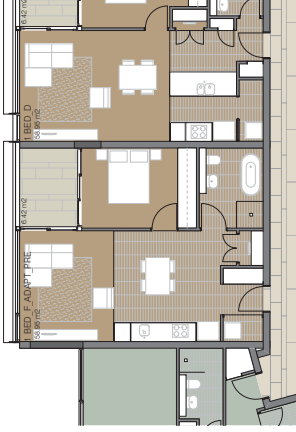
|   |   |  |  |                         |
|---|---|--|--|-------------------------|
| <p>Client<br/><b>Meriton</b><br/>MELBORNE</p>   | <p>Project<br/>84-92 Errom Road<br/>Zetland</p> | <p>Drawings Title<br/>Shadow Studies_Winter Solstice June 21</p> | <p>Scale<br/>1:1000 @A1<br/>1:2000 @A3</p> | <p>Issue<br/>01</p>     |
| <p>Architect<br/><b>AJ+C</b><br/>ARCHITECTS<br/>79 Mylar Street Chippendale NSW 2008 AUSTRALIA<br/>Ph: 61 2 9550 1000<br/>A/N: 53 003 782 250</p> | <p>Drawings Index<br/><b>Information</b></p>    | <p>Page No. 14227</p>  |  |                         |
| <p>Key</p>  | <p>Orientation</p>                              | <p>Developer<br/>Shore Real Estate Development</p>               | <p>Site No.<br/>101/218</p>                | <p>Site No.<br/>101</p> |

© 2017 Meriton Group Pty Ltd. All rights reserved. This drawing is the property of Meriton Group Pty Ltd. It is to be used only for the project and site for which it was prepared. No part of this drawing may be reproduced, stored in a retrieval system, or transmitted in any form or by any means, electronic, mechanical, photocopying, recording, or by any information storage and retrieval system, without the prior written permission of Meriton Group Pty Ltd.



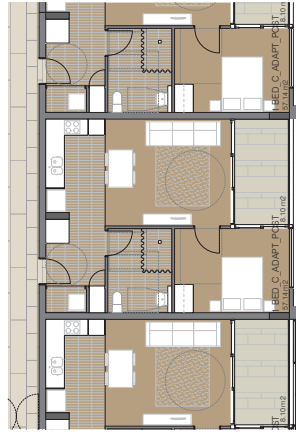
1 Bed C Pre Adaptation

BUILDING\_D\_UNITS\_245, 246, 247, 346, 347, 348, 448, 447, 448, 546, 547, 548

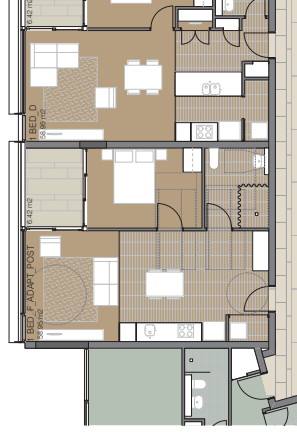


1 Bed F Pre Adaptation

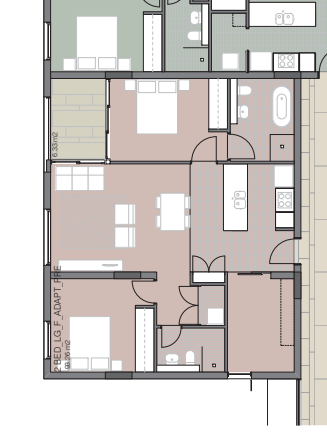
BUILDING\_C\_UNITS\_125, 225, 325  
BUILDING\_D\_UNITS\_289, 240, 340, 440, 540



1 Bed C Post Adaptation

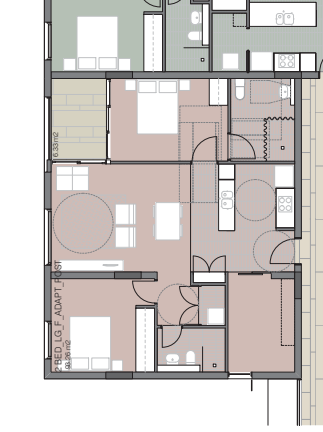


1 Bed Large F Post Adaptation

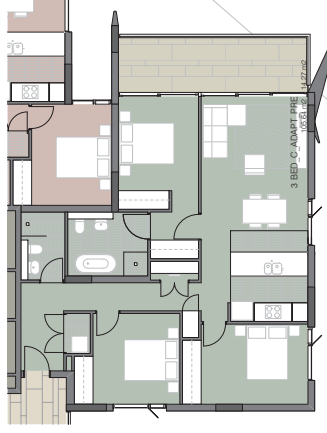


3 Bed C Pre Adaptation

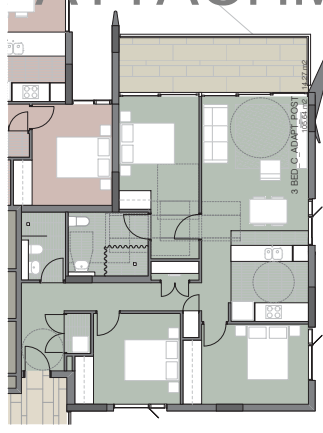
BUILDING\_C\_UNITS\_401, 501, 601, 701, 801, 901, 1001



3 Bed C Post Adaptation



3 Bed C Pre Adaptation



3 Bed C Post Adaptation

# ATTACHMENT A

| ADAPTABLE UNIT SUMMARY |    |
|------------------------|----|
| BUILDING               | A  |
| BED                    | 7  |
| 3 BED                  | 7  |
| TOTAL                  | 14 |

| Scale                | Drawing No. | Issue |
|----------------------|-------------|-------|
| 1:100@A1<br>1:200@A3 | DK-00-9120  | 01    |

| Project                      | Architect  | Client                               | Key | Ver | Appr | Description                       | Issue for Development Application |
|------------------------------|--|--------------------------------------|-----|-----|------|-----------------------------------|-----------------------------------|
| 94- 32 Epsom Road<br>Zetland | AIC+ C<br>ARCHITECTS<br>78 Maple Street<br>Cherrybrook NSW 2568 AUSTRALIA<br>PH +61 2 8311 8223 FX +61 2 8311 8200<br>ASN 53 003 782 250 | Merrion<br>MERRILLTON<br>RESIDENTIAL |     | LC  | JK   | Issue for Development Application | Issue for Development Application |

Do not scale drawings. See layout dimensions only. Check A, and provide and dimensions on all parts not dimensioned in plan. The preparation of this drawing is the responsibility of the architect. The architect is not responsible for the accuracy of the information provided in this drawing. The architect is not responsible for the accuracy of the information provided in this drawing. The architect is not responsible for the accuracy of the information provided in this drawing.